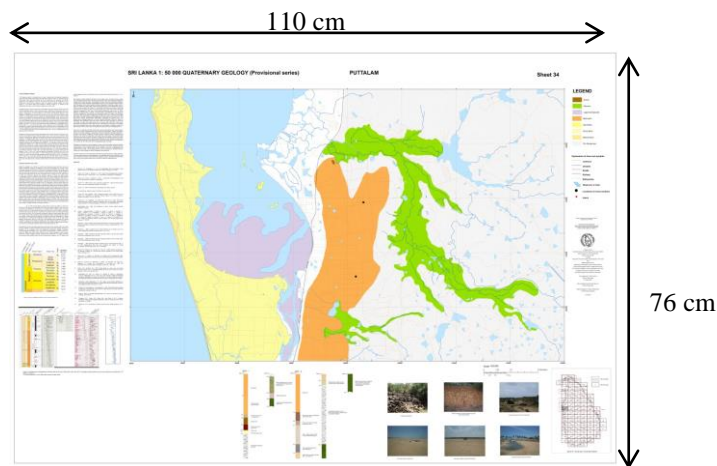


APENDIX I

Dimensions of the Maps

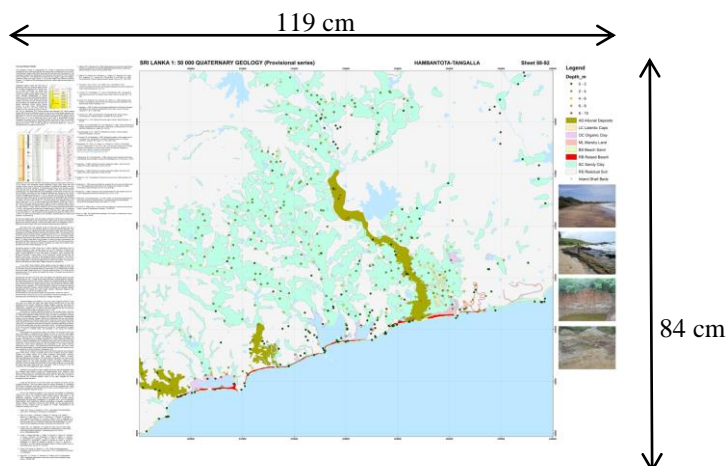
Bidder is requested to provide details of the capacity of printing following printable sizes of the map. If the bidder is not capable of printing according to these specifications kindly request to propose alternative size.

1. Map 1 : Puttalam – Quaternary Map (Sheet No.34)



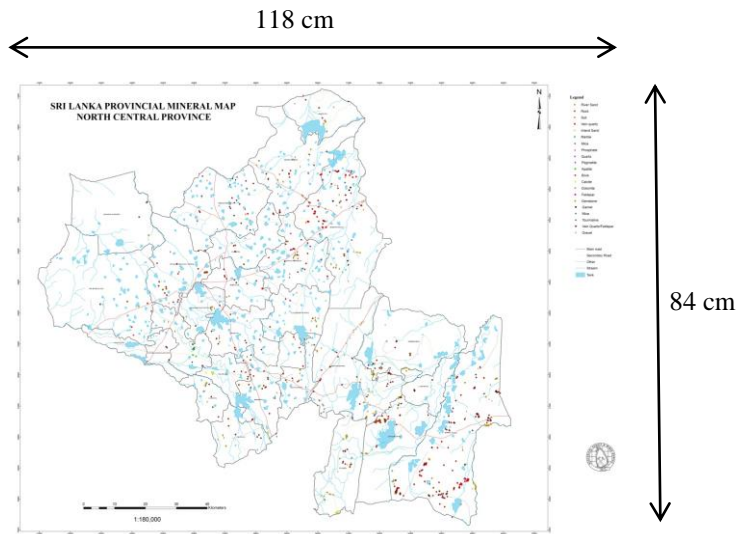
Art paper 158 gms uncoated
Four colour print
100 Copies

2. Map 2 : Hambantota-Tangalla - Quaternary Map (Sheet No.88-92)



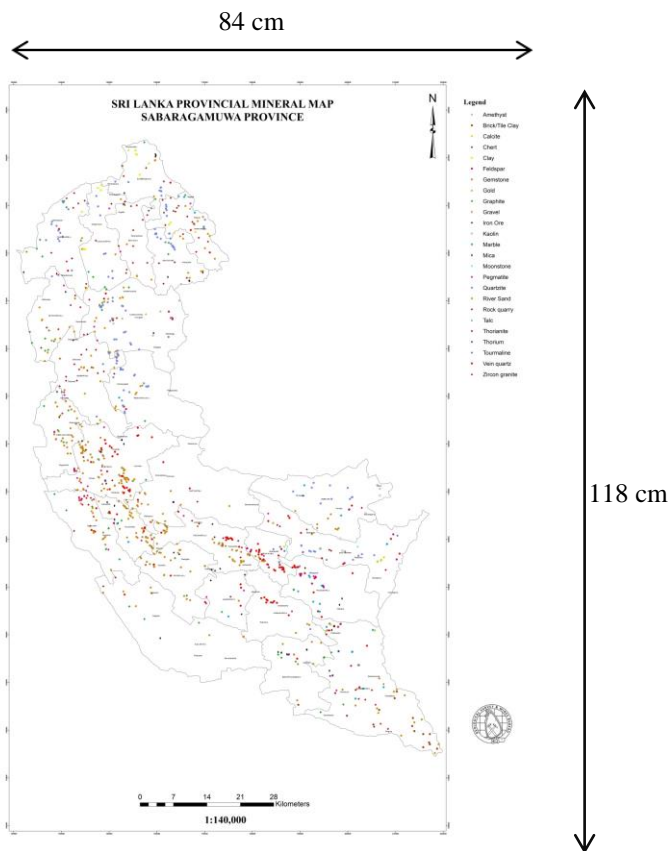
Art paper 158 gms uncoated
Four colour print
100 Copies

3. Map 3 : Provincial Mineral Map – North Central Province



Art paper 158 gms uncoated
Four colour print
100 Copies

4. Map 4 : Provincial Mineral Map – Sabaragamuwa Province



Art paper 158 gms uncoated
Four colour print
100 Copies